

Coronavirus Timetable Changes from Sunday 24th January

Following talks with the local authorities and in response to national lockdown travel restrictions; we will be making some temporary timetable changes across Cambridgeshire and Bedfordshire from Sunday 24th January 2021. These temporary timetables will operate until further notice.

Changes to services are listed below. All other services will continue to operate on their current timetables.

Bedford

- **Routes X5/905:** Services will be reduced, operating hourly from Cambridge to Milton Keynes only. Services between Milton Keynes and Oxford will be withdrawn.

Cambridge

- **Route 18:** The frequency of the service will be reduced to a 2 hourly off peak service Monday-Friday and 2 hourly all day service on Saturdays. duplicate school journeys will not operate.

- **Route 607:** Duplicate School journeys which were in place to offer greater capacity for students will not operate.

- **Route 915:** There will be a slight timetable change due to a diversion between Foxton and Melbourn.

Cambridge Park & Ride

All services will be suspended but other routes which pass the Park & Ride sites will be diverted into the site to collect passengers, as listed below:

- **Citi 4:** The route will remain on the current frequency but will be diverted Monday-Sunday into the **Madingley Road Park & Ride** site during the time that the Park & Ride service would usually operate.

- **Newmarket Road Park & Ride:** The 06:41 Monday-Friday and 07:41 Saturday journey from Stetchworth to Drummer Street and the 17:49 Monday-Saturday return journey from Drummer Street to Stetchworth will continue to operate.

- **Routes 11/12:** Both services will be diverted to cover the **Newmarket Road Park & Ride** site during the time that the Park & Ride service would usually operate. Please note there are no services on Sundays or Bank Holidays.

- There will be no diverted services to cover the **Trumpington Park & Ride site** as services **A, B and 915** are already serving this site.

- **Routes 13/13a/13b/X13:** These routes will remain on their current frequency but will be diverted Monday-Sunday into the **Babraham Road Park & Ride** site during the time that the Park & Ride service would usually operate.

- There will be no diverted services to cover the **Milton Park & Ride site**, so this will not be served during the lockdown.

Fenstanton

- **Route 66:** The frequency will be reduced to a 2 hourly service Monday-Saturday.

- **Route 904:** Duplicate School journeys which were in place to offer greater capacity for students will not operate.

- **Route V5:** The last three journeys to Godmanchester on Mondays-Saturdays will run 10 minutes later. Saturday journeys at 18:40/19:40/20:40 to Godmanchester will not operate. Saturday 05:53 & 06:53 journeys from Godmanchester will run 10 minutes earlier.

Busway

• **Service C:** This service will be suspended. Passengers wishing to travel between Huntingdon and Trumpington can instead use the **B service**.

Services A&B: Frequencies will be changed to:

Monday-Friday:

- **A and B** services will run every 15 minutes off peak between St Ives and Cambridge and every 10 minutes during peak times.
- **A** buses will run every 30 minutes off peak between St Ives Marley Road and Cambridge.
- **B** buses will run every 30 minutes off peak between Hinchingsbrooke Hospital and Cambridge.

Saturday:

- **A and B** services will run every 15 minutes between St Ives and Cambridge.
- **A** buses will run every 30 minutes between St Ives Marley Road and Cambridge.
- **B** buses will run every 30 minutes between Hinchingsbrooke Hospital and Cambridge.

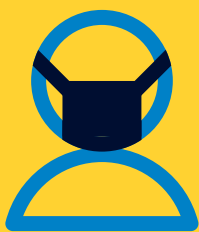
Sunday:

- **A and B** services will run every 30 minutes between St Ives and Cambridge.
- **A** buses will run every 60 minutes between St Ives Marley Road and Cambridge.
- **B** buses will run every 60 minutes between Hinchingsbrooke Hospital and Cambridge

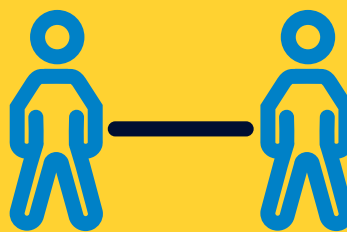
Peterborough:

All routes will continue to operate on their current timetables until further notice.

**Only travel if your journey is essential.
If you do need to travel with us, please
follow the latest safe travel guidance:**



**You MUST
wear a face
covering**
(unless exempt)



**Stay
apart**



**Go cashless
and Pay by
Contactless if
you can**